

The piano collection

PLEYEL
Depuis 1807 à Paris





PLEYEL

Depuis 1807 à Paris

P series page 4

Haute Facture collection page 18

Art & Design collection page 28



La série

While countless Pleyel pianos have enjoyed immense success throughout the two centuries of the French manufacturer's existence, the P models remain indisputably among its finest achievements. This earned the P131 the nickname "King of Uprights".

The upright pianos of the P series are available in two models, P124 and P131, with four finishes, one of which pays special tribute to the painter Pierre-Auguste Renoir.

The P170 and P190 grand pianos share the same manufacturing technique and a unique finish, distinguished by their dimensions.

The Trocadero models are simple and elegant, inspired by Art Deco, and offer two finishes: glossy black and glossy white.

The Opéra models, worthy heirs to the brand's French know-how, feature a refined finish that combines aesthetic excellence with the age-old sound quality of Pleyel.



P124-BLK

Upright piano - Black glossy - Height 124 cm

The sensitivity of the touch, based on balance and precision, allows the most demanding pianists to access the sensations of an exceptional piano. Ample and warm basses, fine and luminous highs accompany with their harmonic richness the fruity song of the midrange, typical of Pleyel. This piano is for musicians who want to choose a top-of-the-line instrument in a cabinet with refined woodwork. It combines pianistic and aesthetic qualities.

P124



P124

P124-WHT
Upright piano - White glossy - Height 124 cm

P124-MAC
Upright piano - Black and Macassar ebony glossy - Height 124 cm

P131 Romantica

P131



P131R-BLKS

Upright piano – Brushed black - Height 131 cm

The P131R is a tribute to the painter Pierre-Auguste Renoir who used this emblematic Pleyel piano as a model for his painting "Woman at the Piano" painted in 1876. This instrument has the classic aesthetic of the mythical Pleyel P131 upright piano of the time but with a resolutely modern brushed black finish. This piano embodies the best of craftsmanship while benefiting from all the musical qualities of a contemporary Pleyel. The precision of its touch, served by a Pleyel-spec action, offers pianists of all levels a wide range of nuances.

Tribute to Renoir

P131-BLK

Upright piano – Black glossy - Height 131 cm

All of Pleyel's musicality is expressed in this beautiful instrument, which is derived from the famous P model, and whose qualities are similar to those of a grand piano: powerful bass, very clear midrange, delicate treble, expressive power, subtle nuances, and dynamic touch. This piano is suitable for the demanding amateur as well as the professional.

P170

P190



P170-BLK

Baby grand piano - Black glossy - Length 170 cm

This baby grand piano is in the great tradition of the F models that have made Pleyel famous throughout the world. With its refined richness of tone, a Pleyel signature, the sound is exceptionally dynamic thanks to a soundboard with original proportions. Its great sensitivity to nuances, served by a very precise touch, allows the exploration of the entire piano repertoire.

P190-BLK

Grand piano - Black glossy - Length 190 cm

The variety of harmonic nuances and the sonic power of this great grand piano ensure uncompromising musical pleasure. This high quality instrument is a perfect combination of age-old know-how and modern technology. Great musical power, warmth of the deep and ample bass, colorful harmonies, highs as defined as they are subtle, are only a few of the exceptional characteristics of this piano of character, which is as effective in chamber music concerts as it is in a more intimate setting.

P170

Trocadéro



P170T-BLK

Baby grand piano - Black glossy - Length 170 cm

The Trocadero is the sign of the revival of the House of Pleyel. It elegantly combines the Art Deco style, which was one of Pleyel's successes, and the modern and pure lines of contemporary pianos.

P170T-WHT

Baby grand piano - White glossy - Length 170 cm

Based on the harmonic structure of the P170, always without concession, its harmonic richness and its very precise touch allow the pianist an unexpected freedom of expression for a piano of this size. Its elegance will perfectly enhance a contemporary decoration.



OP190-BLK

Grand piano - Black glossy - Length 190 cm

This Opera model has a unique and refined finish. Decorated with turned legs and a Pleyel openwork music stand in the romantic style with the famous Pleyel scrolls, a true Pleyel signature, this instrument is synonymous with a certain art of living, fine craftsmanship and inimitable French elegance. Its great sensitivity to nuances, served by a very precise touch, allows the exploration of the entire piano repertoire.

OP190-BLKR

Grand piano - Black glossy - Length 190 cm

Behind the wisdom of its romantic lines and its black lacquer finish, this model reveals a vibrant red Opera lacquer inside, like a jewel hidden in the heart of the instrument. With a refined richness of tone, the sound displays an exceptional dynamics. Great musical power, warmth of the deep and ample bass, colorful harmonies, highs as defined as subtle, are only some of the exceptional characteristics of this piano with character.

Technical specifications P Series

Upright pianos

Action:	Pleyel specifications and technology
Hammerheads:	Wurzen ffW® Germany, hornbeam core, with under-felt
Keyboard:	Austria solid spruce, ebony and PVC, 88 notes
Soundboard:	Ciresa, solid spruce from val de Fiemme, Italy
Pinblock:	Dehonit, Germany
Strings:	Hellerbass & Röslau, Germany
Bridges:	first quality solid beech, Austria
Frame:	hammered brass finish
Fallboard:	damping system
Pedals:	sustain, soft, mute
Origin:	developped in France, assembled in Indonesia
Finishes:	P124-BLK: black glossy, brass hardware P124-WHT: white glossy, brass hardware P124-MAC: black and Macassar ebony glossy, black hardware P131-BLK: black glossy, brass hardware P131R-BLKS: brushed black (satin), brass hardware
Dimensions (HxLxW):	P124: 124 x 148 x 66 cm P131: 131 x 149 x 68 cm
Weight:	P124: 235 kg P131-BLK: 260 kg P131R-BLKS: 282 kg
Accessories:	all the upright pianos can be supplied with an optional matching bench



Silent system



Sensors	88 key sensors 100% optical, non-contact 3 pedal sensors 100% optical, non-contact
Sounds	127 sounds in total, including 5x piano, 4x electric piano, 1 harpsichord, 1 church organ, 8 other organ sounds 9 sound samples for each key for the piano sound 128 dynamic levels maximum polyphony 247 notes
Effects	sound effects: Hall (Chorus, Rotary), Delay, 4 band EQ, transpose
Functions	metronome: rhythm, speed, volume recordings: 10 memory spaces 10 demo songs pitch control 440Hz+/-13Hz
Digital interface	Bluetooth MIDI (only with smartphones and tablets) USB MIDI for connection to mobile devices, laptops and PCs
Analog Outputs	2 x 3.5 mm headphone jacks 3.5 mm stereo output
Dimensions	control box: W: 143mm D: 79mm H: 27mm
Headphones	delivered with SONY MDR-ZX310 headphones

All P-Series uprights and grand pianos can be equipped with an optional AdSilent system.

Play in peace and quiet at any time of the day or night, without disturbing your surroundings or your neighborhood.

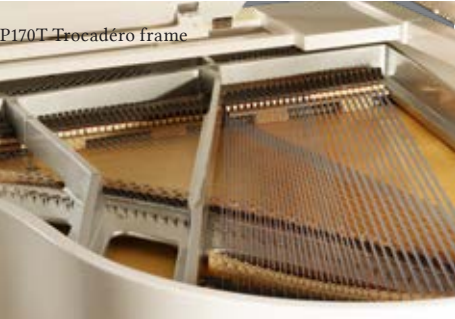
When using your Adsilent mute system, you keep the touch of your piano. For grand pianos, we offer the version with the Let-Off Expansion System (LES): This additional system adapts the mechanical regulation for use with the mute rail, only when the mute rail is activated. In normal operation, your grand piano remains completely unchanged - as if it had no mute system.



Technical specifications P Series

Grand pianos

Action:	Pleyel specifications and technology
Hammerheads:	Wurzen ffW® Germany, hornbeam core, with under-felt
Keyboard:	Austria solid spruce, ebony and PVC, 88 notes
Soundboard:	Ciresa, solid spruce from val de Fiemme, Italy
Pinblock:	Dehonit, Germany
Strings:	Hellerbass & Röslau, Germany P170T : Paulello silver spun bass strings
Bridges:	first quality solid beech, Austria, first quality maple saddle
Frame:	brass finish (P170, P190 & OP190) silver finish(P170T)
Fallboard:	damping system
Lyre :	shaped
Pedals:	sustain, sostenuto, soft
Origin:	developped in France, assembled in Indonesia
Finishes:	P170-BLK: black glossy, brass hardware P170T-BLK: black glossy, chrome hardware P170T-WHT: white glossy, chrome hardware P190-BLK: black glossy, brass hardware OP190-BLK: black glossy, brass hardware OP190-BLKR: red glossy and black glossy, brass hardware
Dimensions (HxLxW):	P170: 104 x 150 x 170 cm P190: 104 x 150 x 190 cm
Weight:	P170 & P170T: 329 kg P190 & OP190: 355 kg
Accessories:	all the grand pianos can be supplied with an optional matching bench



Benches



BP124-BLK
Adjustable
height 48-58cm
Seat in black imitation leather
Seat dimensions 55x32cm
Black glossy finish



BP124WHT
Adjustable height 48-58cm
Seat in white imitation leather
Seat dimensions 55x32cm
White glossy finish



BP170-BLK
Adjustable height 47-57cm
Seat in black imitation leather
Seat dimensions 57x42cm
Black glossy finish



BP190-HYDRAU-BLK
Hydraulic system
Adjustable height 47-57cm
Seat in real black leather
Seat dimensions 57x42cm
Black glossy finish



BP131R-BLKS
Stool adjustable in height 48-58cm
Black velvet seat
Seat diameter 35cm
Black satin finish



Opéra Garnier - Paris

La collection **PLEYEL** Haute Facture

Pleyel is also dedicated to the manufacture of exceptional grand pianos: the Haute Facture pianos.

Thanks to a rigorous selection of the finest materials and traditional craftsmanship, these pianos offer optimal performance while respecting the brand's sound identity.

Haute Facture

Walkyrie



F170-BLK Walkyrie

Baby grand piano developed in France, assembled in Germany at Bayreuth in 2021.

Glossy black lacquer. Length 170cm

F190-BLK Walkyrie

Grand piano developed in France, assembled in Germany at Bayreuth in 2021.

Glossy black lacquer. Length 190cm

Haute Facture

Grand Palais



P204 Grand Palais black n°269104

Grand piano made at the Manufacture Française de Pianos in Saint Denis in 2013.
Glossy black lacquer and burr wood interior. Length 204cm.

The modern heir to the mythical No. 3 model, this piano was first produced from 1906 to 1937 in some 2625 copies. Delicacy and harmony, warmth of the deep and ample bass, colorful harmonies, well-defined and subtle highs, make this piano a piano of character with great musical power.

P204 Grand Palais midnight blue n°269060

Grand piano - 1st piano made at the Manufacture Française de Pianos in Saint Denis in 2009.
Midnight Blue satin lacquer. Length 204cm.

With its midnight blue satin lacquer finish, metallic grey frame and brushed steel hardware, this piano is the first model created by the Pleyel Piano Factory since its relocation to Saint-Denis in 2007. This piano offers the most demanding pianists the power but also the homogeneity and comfort of a concert grand piano.



Concert AL278 n°206228

Concert grand piano made in France in Saint-Denis in 1959.
Glossy black lacquer, Length 278cm.

This concert piano is in the great Pleyel tradition. Sustained singing, colorful timbre, great depth and breadth of the bass, warmth of the midrange and finesse of the treble: its musical qualities combined with the power and balance necessary for a great concert grand piano allow the highest technical demands from contemporary concert pianists.

Technical specifications

Walkyrie grand pianos

Action:	Renner, Germany, upon Pleyel specifications
Hammerheads:	Wurzen ffW® Germany, hornbeam core, with under-felt
Keyboard:	Kluge, Germany, solid spruce from Austria, ebony and PVC, 88 notes
Soundboard:	Ciresa, solid spruce from val de Fiemme, Italy
Pinblock:	First quality 7 ply maple
Strings:	Hellerbass & Röslau, Germany
Bridges:	first quality solid beech, Austria, first quality maple saddle
Frame:	gold finish
Fallboard:	damping system
Lyre:	shaped
Pedals:	sustain, sostenuto, soft
Origin:	developped in France, assembled in Bayreuth, Germany
Finishes:	F170-BLK Walkyrie: black glossy, brass hardware F190-BLK Walkyrie: black glossy, brass hardware
Dimensions (HxLxW):	F170 Walkyrie: 104 x 150 x 173 cm F190 Walkyrie : 104 x 150 x 190 cm
Weight:	F170 Walkyrie: 329 kg F190 Walkyrie: 354 kg
Accessories:	Walkyrie grand pianos can be equipped with a silent system from Adsilent



Walkyrie shaped lyre and legs



Concert AL278 Grand piano

Renner, Germany, upon Pleyel specifications
Renner, Germany, hornbeam core, with under-felt
Kluge, Germany, solid spruce from Austria, ebony and PVC, 88 notes
Ciresa, solid spruce from val de Fiemme, Italy
7 ply canadian maple, Diamant tuning pins
Hellerbass & Röslau, Germany
first quality solid beech, Austria, first quality maple saddle
gold finish
-
straight
sustain, sostenuto, soft
made in Saint-Denis, France
black glossy, brass hardware
100 x 160 x 278 cm
480 kg



Concert AL278 straight lyra and legs



La collection Haute Facture

Grand Palais P204 Black grand piano

Action:	Renner, Germany, upon Pleyel and Paulello specifications
Hammerheads:	Renner, Germany, hornbeam core, with under-felt
Keyboard:	Laukhuff, Germany, solid spruce from Austria, ebony and PVC, 88 notes
Soundboard:	Ciresa, solid spruce from val de Fiemme, Italy
Pinblock:	Delignit beech multiply, Klinke tuning pins
Strings:	Paulello, France
Bridges:	first quality solid beech, Austria, first quality maple saddle
Frame:	gold finish
Fallboard:	damping system
Lyre:	shaped
Pedals:	sustain, sostenuto, soft
Origin:	made in Saint-Denis, France
Finishes:	black glossy, brass hardware
Dimensions (HxLxW):	100 x 156 x 204 cm
Weight:	375 kg



P204 black shaped lyre and legs



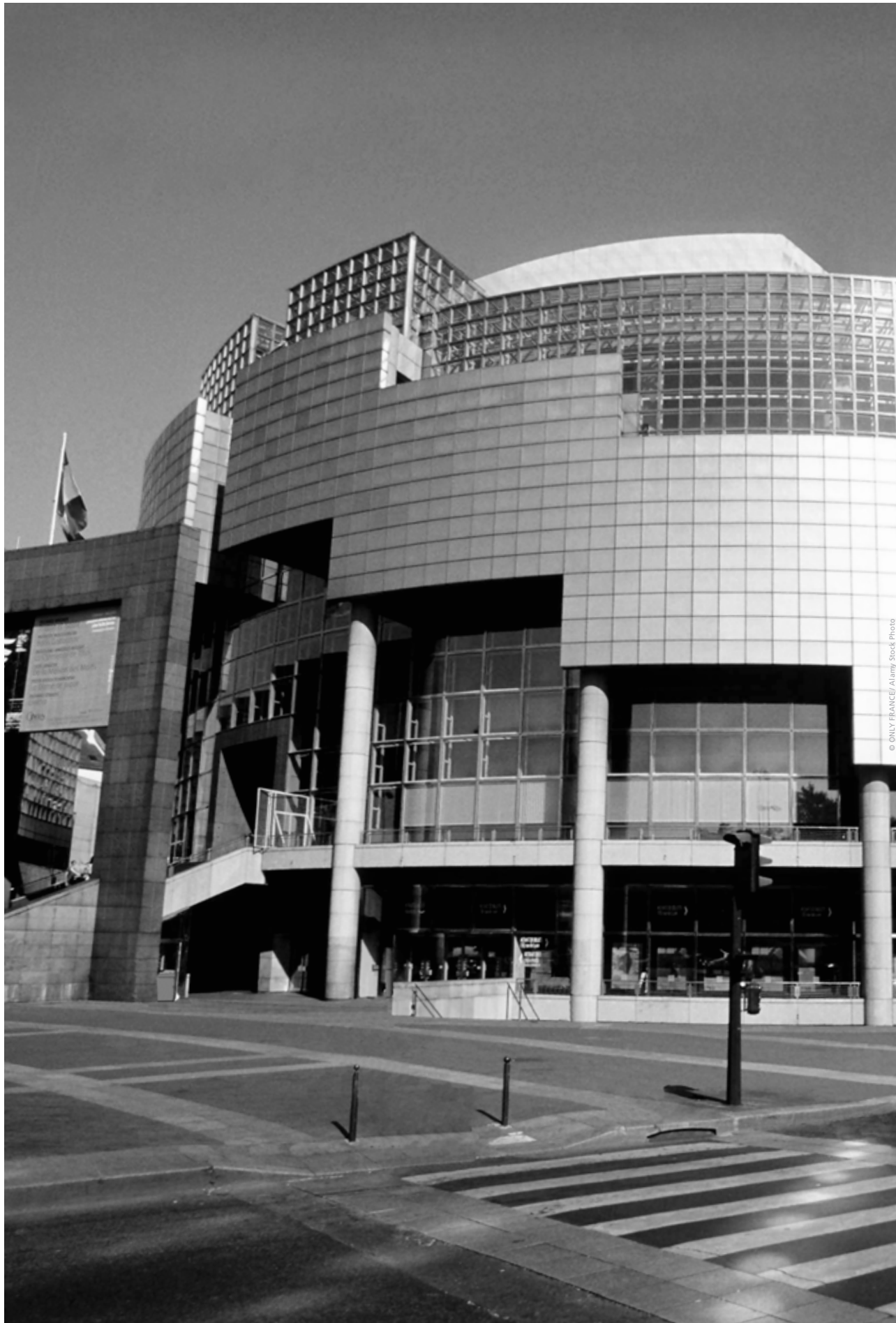
Grand Palais P204 Midnight Blue grand piano

Renner, Germany, upon Pleyel and Paulello specifications
Renner, Germany, hornbeam core, with under-felt
Laukhuff, Germany, solid spruce from Austria, ebony and mammoth ivory, 88 notes
Ciresa, solid spruce from val de Fiemme, Italy
Delignit beech multiply, Klinke tuning pins
Paulello, France
first quality solid beech, Austria, first quality maple saddle
silver finish
damping system
shaped
sustain, sostenuto, soft
made in Saint-Denis, France
midnight blue satin, brushed steel hardware
100 x 156 x 204 cm
375 kg



P204 midnight blue shaped lyre and legs

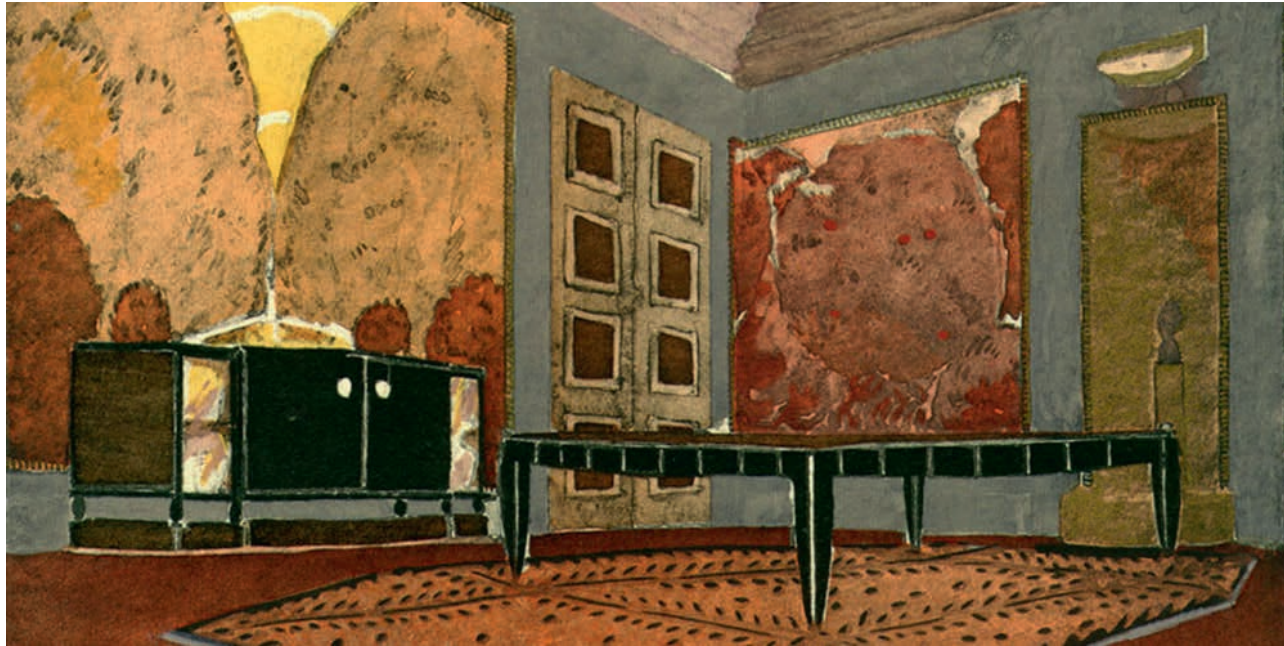




Opéra Bastille - Paris

La collection **PLEYEL** *Art & Design*

The Art & Design pianos bring together unique pieces signed by contemporary designers who have transcended their creativity to pay tribute to the perfection of Pleyel pianos. The exceptional pieces that emerge from this association highlight the designer's design, the refinement of fine workmanship, and French elegance.



Interiors of Ruhlmann - *Harmonies* (1924)



Ruhlmann « 1937 » Naccarat red n°269 103

Reissue - Design : Jacques-Emile Ruhlmann. Pleyel baby grand 170 made at the Manufacture Française de Pianos in Saint Denis in 2013. Glossy Naccarat red lacquer. Fluted bows and nickel-plated steel fittings. Length 177cm.

An undeniable genius of 20th century decorative art, Jacques-Emile Ruhlmann naturally became interested in the piano as part of his work as a designer. Driven by the ambition to renew French taste in furniture and interior decoration, he created for the Pleyel company several models of piano with geometrical, trapezoidal and uncluttered shapes for interiors that he was asked to create in terms of architecture and furniture. This contemporary version of the "1937" piano with its Naccarat red lacquer finish brings a touch of modernity to this already timeless instrument. It was made specifically at the request of one of France's most renowned interior decorators to be placed in a magnificent Monegasque residence.

Art & Design



Hilton McConnico : Parallèle



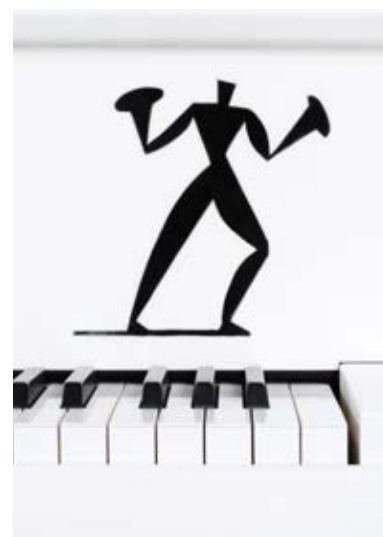
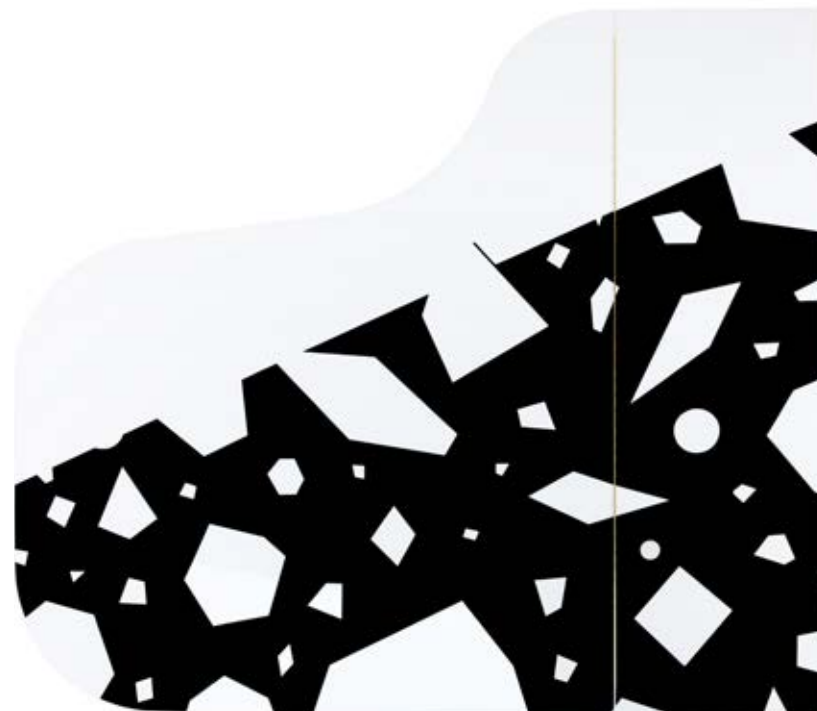
Hilton McConnico « Parallèle » P170 n°269 091

Hilton McConnico design. Made at the Manufacture Française de Pianos in St Denis in 2012.

Matte and glossy cocoa lacquer / glossy vermillion red lacquer. Length 170cm.

Signature of the designer.

Bold designer Hilton McConnico chose the 1.70m Pleyel baby grand piano to symbolize the marriage between music and design, the delicacy of sound and the graphic aesthetic. From a distance, supported by altuglas legs, the piano seems to be suspended in space, as if it were just resting on its lyre. Parallel stripes in matte and glossy lacquer create musical staves on the piano's belt like a dreamlike score. Up close, the interior of the piano hypnotizes with its vermillion red color, down to the smallest details: the inside of the lid, the frame, the soundboard, the bridges, but also the felts on the string plane and the dampers..



Aki Kuroda « Spacemeeting » P190 n°269 043

Grand piano. Unique model made in France at the Alès factory in 2006.

Piano "work of art" by the artist Aki Kuroda, produced in collaboration with the Maeght Gallery. Black and white glossy lacquer finish. Length 190cm. Signature of the artist on the right side. Matching bench.

Painter, sculptor, draughtsman, engraver, creator of installations and theater sets, Aki Kuroda is a multi-faceted artist who gives life to his creations in very studied scenographies. This piano is an echo of his work "Cosmogarden", where he metamorphoses the piano into a space of meeting and passage where music and light meet, against the backdrop of a cosmic night, a night that multiplies like a flower, a cosmos in which the contours of man can be distinguished. "Spacemeeting" is born of spontaneity, the movement of the form making the line spring forth. The brightness of this piano, highlighted by its brilliance, lies in a vision of the universe that is both excessively serene and somewhat violent. The poetry of the flower dear to Aki Kuroda comes to soothe the cosmic geometry of the lid and the presence of man in the universe.

Jean Cortot



Jean Cortot « Alèssido » P190 n°268 445

Grand piano. Unique model made in France at the factory in Alès in 2006.
Piano "work of art" of the artist Jean Cortot, produced in collaboration with the Maeght Gallery.
Blue and ochre satin lacquer finish. Length 190cm. Signature of the artist. Matching bench.

Jean Cortot celebrates the modernity of the Salle Pleyel on the occasion of its reopening in 2006 with a plastic homage to the music and work of his father, the pianist Alfred Cortot (1877-1962) whose musical life was closely linked to that of the Pleyel pianos and the Salle Pleyel. Through "Alèssido", the artist gives us his interpretation of a piano in the vein of his famous series of "writings", a true symbiosis of writing and painting... The names of the greatest composers who inspired the Pleyel house are written on imaginary staves with an allegorical graphics reminiscent of musical notes.

Art & Design



Andrée Putman : Voie Lactée



Andrée Putman « Voie lactée » P217 n°269 063

Design Andrée Putman. Prototype made at the Manufacture Française de Pianos in Saint Denis in 2008.
Glossy black lacquer finish. Interior of the cover in midnight blue / starry sky with mother of pearl inlays. Length 217cm.
Signature of the designer. Matching bench.

Andrée Putman conceived this piano as the instrument crystallized into a unique luxury object, transformed into a life-size music box of unprecedented proportions, with a milky way painted inside the lid in indigo and navy blue lacquer and set with constellations of mother-of-pearl stars. The score holder and the checkerboard lid stick, made of Corian, recall the designer's style. This 2m17 grand piano has been created with the harmonic structure of the 2m04 grand piano, heir of the mythical Pleyel n°3 model, chosen by the greatest concert pianists such as Alfred Cortot. A marriage between design and music, curved and straight lines, black lacquer and blue milky way with its constellated stars, keyboard and checkerboard, an interface between music and decorative arts, between piano and design.

Technical specifications

Ruhlmann: 1937

Action:	Renner, Germany, upon Pleyel specifications
Hammerheads:	Renner, Germany, hornbeam core, with under-felt
Keyboard:	Laukhuff, Germany, spruce, ebony and PVC, 88 notes
Soundboard:	Ciresa, solid spruce from val de Fiemme, Italy
Pinblock:	beech multiply, Klinke tuning pins
Strings:	Paulello, France
Bridges:	first quality solid beech, Austria, first quality maple saddle
Frame:	Naccarat red lacquer finish
Feet:	Shaped with nickelplated steel fittings
Pedals:	sustain, sostenuto, soft
Origin:	made in Saint-Denis, France
Finishes:	Naccarat red glossy, fluted lyra and nickel hardware
Dimensions (HxLxW):	100 x 160 x 177 cm
Weight:	550 kg



Hilton McConnico: Parallèle

Renner, Germany, upon Pleyel specifications
Renner, Germany, hornbeam core, with under-felt
Laukhuff, Germany, spruce, ebony and PVC, 88 notes
Ciresa, solid spruce from val de Fiemme, Italy
beech multiply, Klinke tuning pins
Paulello, France
first quality solid beech, Austria, first quality maple saddle
vermilion red lacquer finish
Altuglas with nickelplated steel fittings
sustain, sostenuto, soft
made in Saint-Denis, France
Matte and glossy cocoa lacquer / glossy vermilion red lacquer
100 x 150 x 170 cm
330 kg



Aki Kuroda: Spacemeeting

Action:	Renner, Germany, upon Pleyel specifications
Hammerheads:	Renner, Germany, hornbeam core, with under-felt
Keyboard:	Kluge, Germany, spruce, ebony and PVC, 88 notes
Soundboard:	Ciresa, solid spruce from val de Fiemme, Italy
Pinblock:	Delignit beech multiply, Klinke tuning pins
Strings:	Röslau, Germany
Bridges:	first quality solid beech, Austria, first quality maple saddle
Frame:	gold finish
Lyre:	shaped
Pedals:	sustain, sostenuto, soft
Origin:	made in Alès, France
Finishes:	white lacquer glossy and black glossy, brass hardware, matching bench
Dimensions (HxLxW):	100 x 150 x 190 cm
Weight:	360 kg



Jean Cortot: Alèssido

Renner, Germany, upon Pleyel specifications
Renner, Germany, hornbeam core, with under-felt
Kluge, Germany, spruce, ebony and PVC, 88 notes
Ciresa, solid spruce from val de Fiemme, Italy
Delignit beech multiply, Klinke tuning pins
Röslau, Germany
first quality solid beech, Austria, first quality maple saddle
gold finish
straight
sustain, sostenuto, soft
made in Alès, France
Blue and ochre satin lacquer, brass hardware, matching bench
100 x 150 x 190 cm
400 kg



Andrée Putman: Voie Lactée

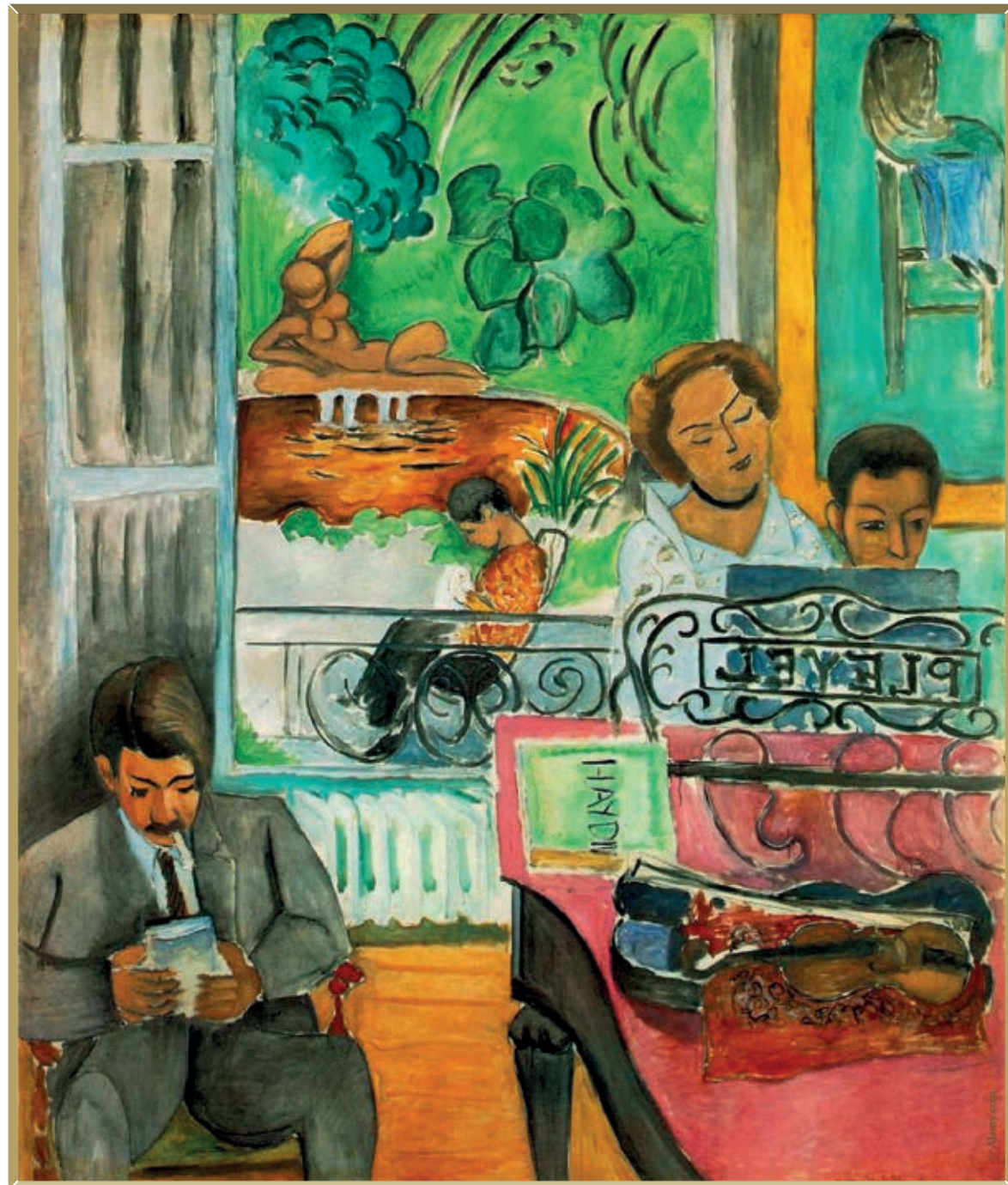
Renner, Germany, upon Pleyel and Paulello specifications
Renner, Germany, hornbeam core, with under-felt
Laukhuff, Germany, spruce, ebony and PVC, 88 notes
Ciresa, solid spruce from val de Fiemme, Italy
Delignit beech multiply, Klinke tuning pins
Röslau, Germany
first quality solid beech, Austria, first quality maple saddle
black glossy finish
nickelplated steel
sustain, sostenuto, soft
made in Saint-Denis, France
Glossy black lacquer finish. Interior of the cover in midnight blue / starry sky with mother of pearl inlays
105 x 160 x 217 cm
550 kg



La collection Art & Design

PLEYEL

Depuis 1807 à Paris



When Pleyel inspired legendary painters...

Henri Matisse - *The music lesson* (1917)



Pleyel suggested retail pricelist

No download necessary!

Scan this QR code with your camera on your smartphone or tablet, and access the suggested retail pricelist for Pleyel pianos.

Algam Group - Pleyel Division

5 rue de Milan - 44470 Thouaré-sur-Loire - France
info@pleyel.com
pleyel.com



pleyel.com